

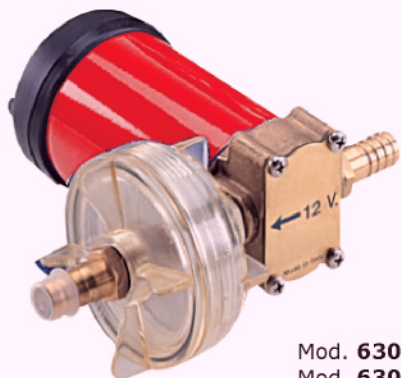


POMPE PNEUMATICHE ED ELETTRICHE ROTATIVE

ELECTRIC AND AIR-OPERATED ROTARY PUMPS

Pompe pneumatiche ed elettriche portatili indicate per piccoli travasi di fluidi di varia natura.

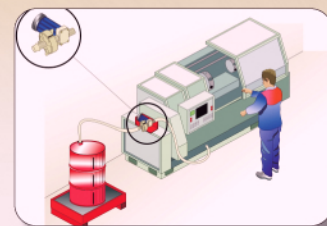
Pneumatic and electric pumps suitable for low volume fluid transfer.



Mod. **6302**
Mod. **6303**
Mod. **6304**
Mod. **6308**

Elettropompa ad ingranaggi per travasi di oli fluidi, antigelo, gasolio, acqua, per uso discontinuo. Corpo pompa in ottone, ingranaggi in bronzo ed albero in acciaio inox.

Electric gear pump for dispensing fluids as oil, antifreeze, diesel, water for intermittent use. Pump body in brass, gears in bronze and shaft in stainless steel.



Mod.	Aliment. Feeding	Assorbimento Current Consumption	Protezione Protection	Portata Flow rate	Attacchi Connections	Peso Weight	Dimensioni Sizes (X-Z-Y) (mm)
6302	12 Vcc	6.5 A	IP55	6 lt/min	F 3/8"BSP	1.5 kg	165x160x80
6303	12 Vcc	6.5 A	IP55	9 lt/min	F 3/8"BSP	2.5 kg	165x166x80
6304	24 Vcc	3.5 A	IP55	6 lt/min	F 3/8"BSP	1.5 kg	165x160x80
6308	24 Vcc	6.5 A	IP55	9 lt/min	F 3/8"BSP	2.5 kg	165x166x80



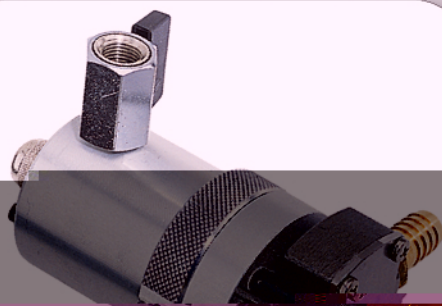
Mod. **6312**
Mod. **6324**

Elettropompa ad ingranaggi per travasi di oli fluidi, antigelo, gasolio, acqua, per uso discontinuo. Corpo pompa in ottone, ingranaggi in bronzo ed albero in acciaio inox. Completa di carenatura, interruttore on/off e pinze di collegamento batteria.

Electric gear pump for dispensing fluids as oil, antifreeze, diesel, water for intermittent use. Pump body in brass, gears in bronze and shaft in stainless steel. Complete with metal cover, on/off switch and clamps for battery connection.



Mod.	Alimentaz. Feeding	Assorbimento Current Consumption	Protezione Protection	Portata Flow rate	Attacchi Connections	Peso Weight	Dimensioni Sizes (X-Z-Y) (mm)
6312	12 Vcc	6.5 A	IP55	6 lt/min	F 3/8"BSP	2.5 kg	165x160x80
6324	24 Vcc	3.5 A	IP55	6 lt/min	F 3/8"BSP	2.5 kg	165x160x80



Pompa pneumatica rotativa ad ingranaggi per travasi di olio, antigelo, gasolio, acqua. Corpo pompa in ottone (mod. 6559) o inox (mod. 1058), ingranaggi in PTFE, tenute in Viton ed albero in acciaio inox.

Pneumatic rotary gear pump for dispensing fluids as oil, antifreeze, diesel, water. Pump body in brass (mod. 6559) or stainless steel (mod. 1058), gears in PTFE and shaft in stainless steel.



Mod.	Alimentazione Feeding	Pressione usc. Output pressure	Portata Flow rate	Attacchi Connections	Peso Weight
------	-----------------------	--------------------------------	-------------------	----------------------	-------------

Dimensioni Sizes (X-Z-Y) (mm)
